

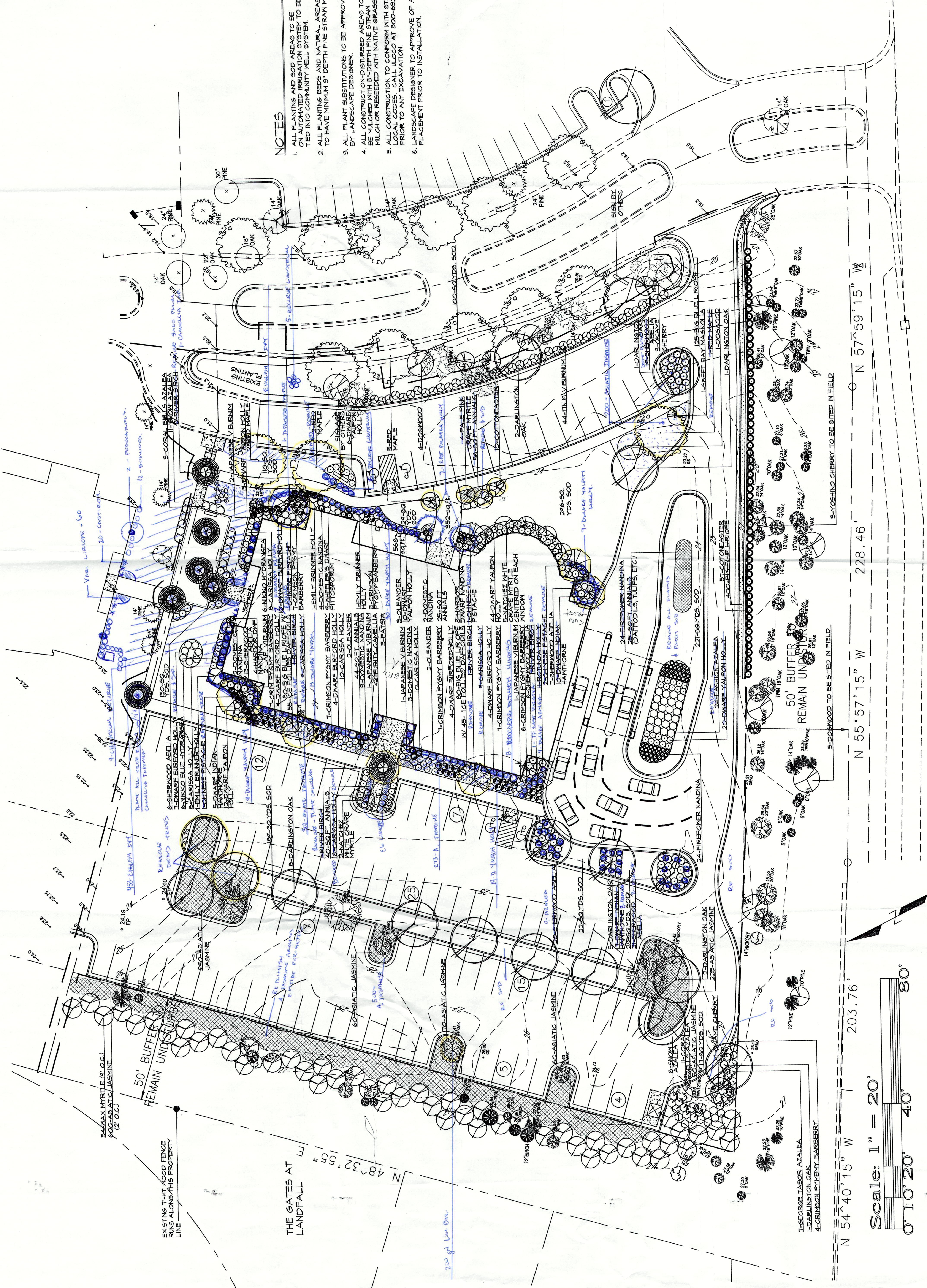
# Landfall Park South Wilmington, NC

RECEIVED  
 DEC 8 2017  
 PLANNING DIVISION

**Landfall Park North  
 Office Building**  
 Landfall Park  
 Eastwood Road  
 Wilmington, NC

Drawing Title:  
**PLANTING PLAN**  
 Date: July 30, 1988  
 Design by: Pamela Tobin Kersting  
 CAD File: Landfall/South/Plant2  
 Sheet Number: 1/1

- NOTES**
1. ALL PLANTING AND SOD AREAS TO BE ON AUTOMATED IRRIGATION SYSTEM TO BE TIED INTO COMMUNITY WELL SYSTEM.
  2. ALL PLANTING BEDS AND NATURAL AREAS TO HAVE MINIMUM 3" DEPTH PINE STRAM MULCH BY LANDSCAPE DESIGNER.
  3. ALL PLANT SUBSTITUTIONS TO BE APPROVED BY LANDSCAPE DESIGNER.
  4. ALL CONSTRUCTION-DISTURBED AREAS TO BE MULCHED WITH 3"-DEPTH PINE STRAM MULCH OR RESEEDED WITH NATIVE GRASS.
  5. ALL CONSTRUCTION TO CONFORM WITH STATE AND LOCAL CODES. CALL ULCOG AT 800-682-4444 PRIOR TO ANY EXCAVATION.
  6. LANDSCAPE DESIGNER TO APPROVE OF ALL PLANT PLACEMENT PRIOR TO INSTALLATION.



Eastwood Road (U.S. Hwy. 74)



# Eastwood Office Building

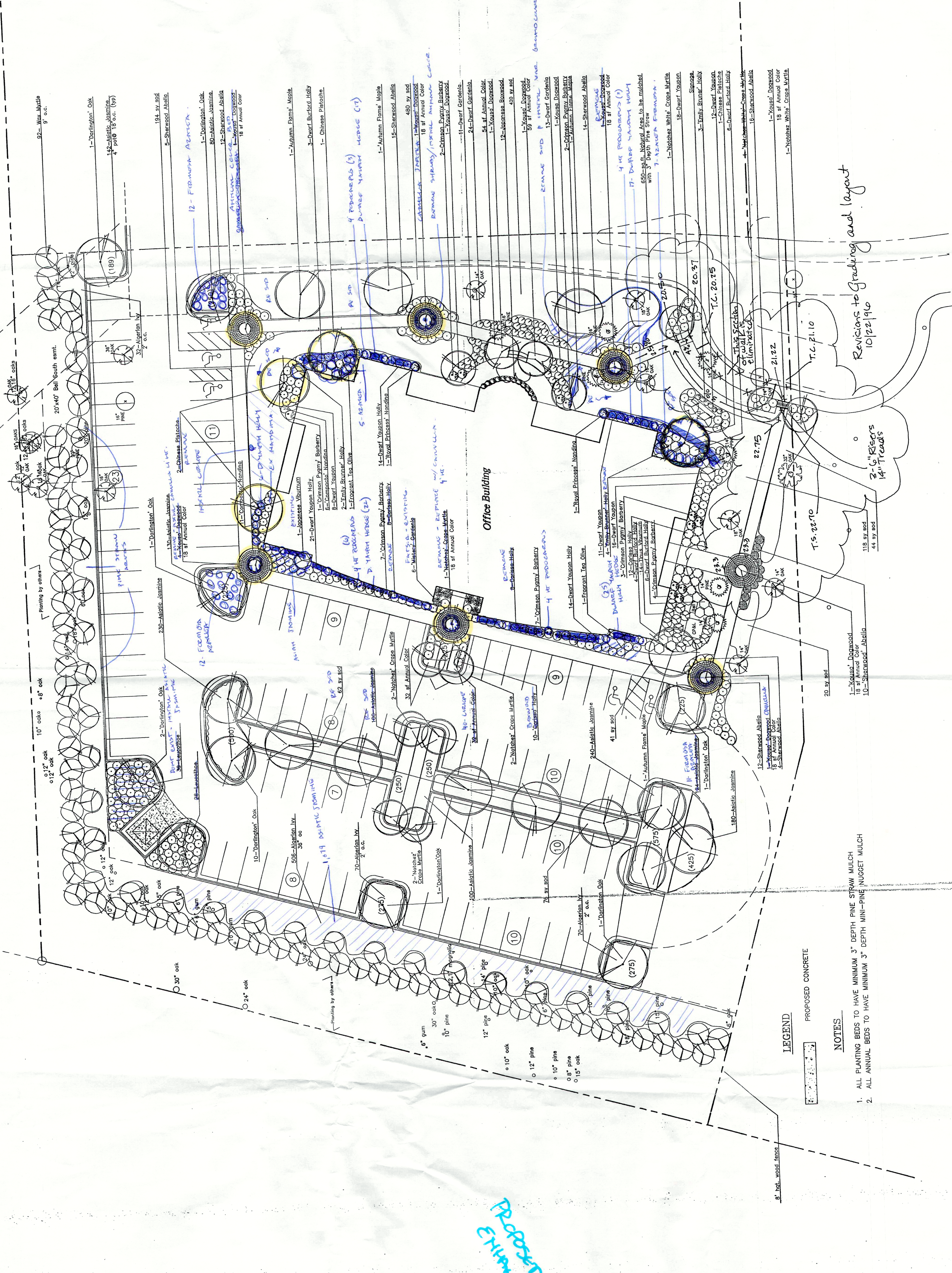
Wilmington, N.C.

## L1 Planting Plan

Landfall Park

Revisions to Grading and layout  
10/22/10

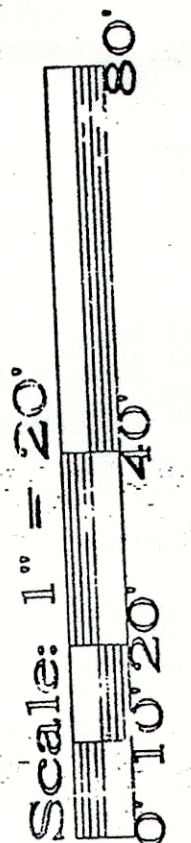
PROPOSED  
ENHANCEMENTS.



LEGEND  
PROPOSED CONCRETE

NOTES

1. ALL PLANTING BEDS TO HAVE MINIMUM 3" DEPTH PINE STRAW MULCH
2. ALL ANNUAL BEDS TO HAVE MINIMUM 3" DEPTH MINI-PINE NUGGET MULCH



Scale: 1" = 20'

RECEIVED  
DEC 5 2017  
PLANNING DIVISION  
Sight Plans, Inc.  
10111 Park Road  
Raleigh, NC 27606  
9/11/96